

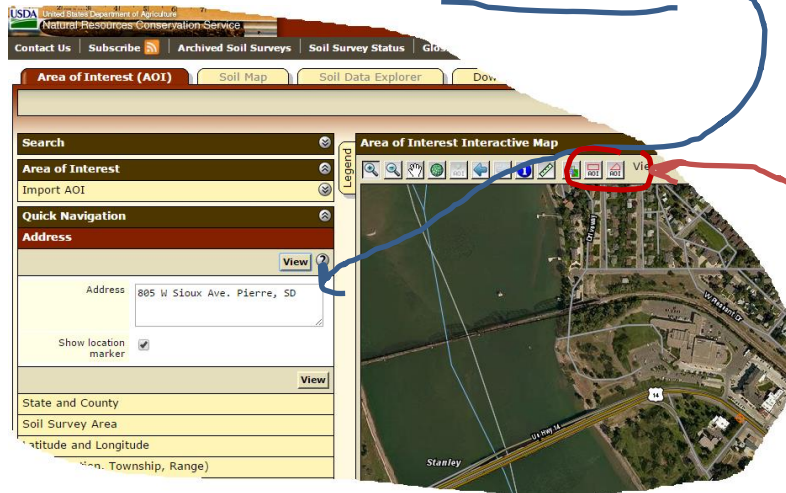
This is an introductory activity to become familiar with the web soil survey.

Web Soil Survey – printout. Follow the Four Basic Steps to look at a web soil survey in an area close by. Suggested activity:

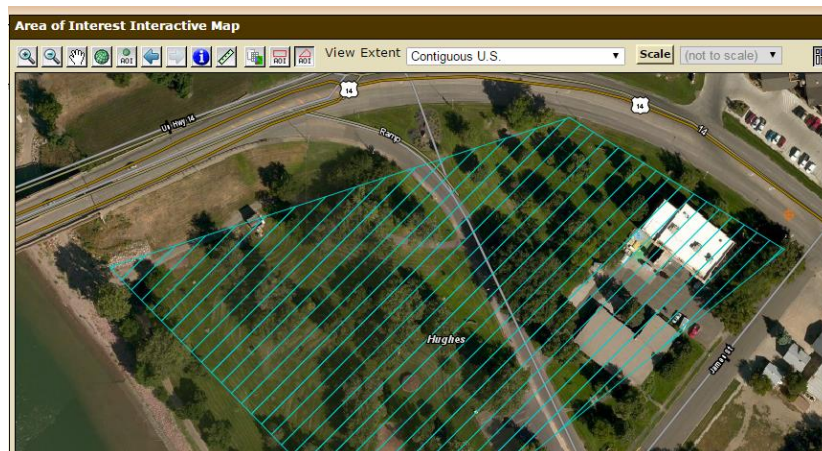
- Go to <http://websoilsurvey.nrcs.usda.gov/app/>
- Click on the green Start WSS button.



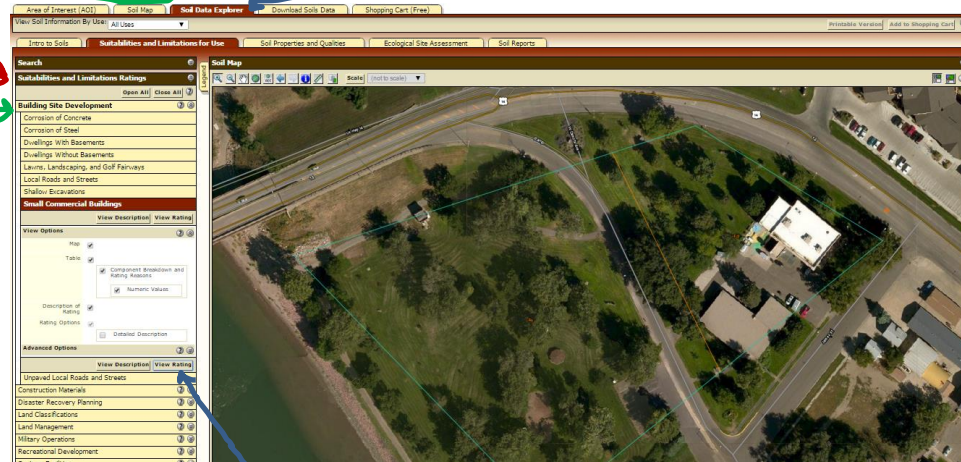
- Use your school's address to define the area of interest.



- You will need to delineate it with a box or polygon, using the buttons. This creates the Area of Interest. (See below).



- e. On the Soil Data Explorer tab, click Suitabilities and Limitations Ratings then Building Site Development



- f. Click on View Ratings.
- g. Is the soil not limited, somewhat limited, or very limited for a small commercial building, i.e. a school?

"Not limited" indicates that the soil has features that are very favorable for the specified use. Good performance and very low maintenance can be expected.

"Somewhat limited" indicates that the soil has features that are moderately favorable for the specified use. The limitations can be overcome or minimized by special planning, design, or installation. Fair performance and moderate maintenance can be expected.

"Very limited" indicates that the soil has one or more features that are unfavorable for the specified use. The limitations generally cannot be overcome without major soil reclamation, special design, or expensive installation procedures. Poor performance and high maintenance can be expected.